



# Finding Home

## A Reflection Guide for Your Next Big Move

---

Just like any big life transition, buying or selling a home is rarely just a transaction.

It's about seasons of life, identity, belonging, and possibility.

Before we talk about bedrooms, acreage, or price, this short reflection guide invites you to slow down and reconnect with what truly matters to you right now.

---

## Your Why

What's prompting this move now?

What feels complete about your current chapter?

What are you hoping will feel different on the other side of this change?

If this move goes well, what does it make possible in your life?

# What Does “Home” Mean to You?

When have you felt most at home in your life? What was present?

What makes you exhale when you walk through a door?

Which of these matter most right now?

- |                                     |   |
|-------------------------------------|---|
| <input type="checkbox"/> Nature     | <input type="checkbox"/> Adventure        |
| <input type="checkbox"/> Community  | <input type="checkbox"/> Comfort          |
| <input type="checkbox"/> Privacy    | <input type="checkbox"/> Space to gather  |
| <input type="checkbox"/> Beauty     | <input type="checkbox"/> Space to retreat |
| <input type="checkbox"/> Simplicity |   |

What matters less than it used to?

---

## How You Want to Live

A perfect ordinary day in your next phase of life looks like:

How do you want to spend your mornings? Evenings?

What role does the outdoors play in your daily life?

How often do you gather, host, or welcome others?

---

## Non-Negotiables & Flexibility

Non-Negotiables (Must-Haves):

Flexible / Nice-to-Haves:

# An Invitation

When you're ready, we'd love to use this as a starting point for a conversation.

Our role isn't just to show properties—it's to help you translate what matters most into a place that fits the life you're building.

— Butler Advisory Group

---

## About Us

We believe in more than just real estate – we create a gateway to an extraordinary mountain lifestyle.

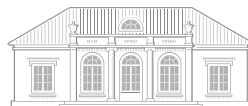
Rooted in adventure, luxury, and the spirit of Big Sky, we guide our clients home to spaces that elevate their lives. With a commitment to integrity, positivity, and deep local expertise, we transform transactions into lifelong connections and dreams into reality.



Kevin Butler | 406.570.3890  
kevin.butler@evrealestate.com



Hannah Bratterud | 406.580.9121  
hannah.bratterud@evrealestate.com



**ENGEL & VÖLKERS**<sup>®</sup>  
BUTLER ADVISORY GROUP

[www.butleradvisorygroup.com](http://www.butleradvisorygroup.com)