

AFFORDABLE NEW HOME LIVING IN HISTORIC CHESTERTOWN

Brand New Townhomes In Downtown Chestertown



**MOVE-IN
READY
HOMES
AVAILABLE**

From \$259,900

Monthly Payments Starting at \$1,347*

**YOUR DOWNTOWN
DREAM HOME AWAITS**

Own Your New Home for Less Than Rent

3 Bedrooms



2 Baths



**MODEL HOME
NOW OPEN**

Call or Text 443-733-6477
for Open House Info

DAVID J. MOORE

A ASSOCIATES
of

real

LIVE WHERE LIFE HAPPENS

Imagine waking up in your brand new home and walking to your favorite coffee shop in just 2 minutes. Spend Saturday mornings at the farmers market, enjoy waterfront parks, and explore charming downtown Chestertown—all without getting in your car.




These aren't just townhomes. They're your gateway to the lifestyle you've been dreaming about while watching your rent money disappear every month.


Why choose Metcalf Townhomes


- ✔ **STOP THROWING MONEY AWAY ON RENT**
Build equity instead of making your landlord rich
- ✔ **WALK TO EVERYTHING YOU LOVE**
Coffee shops, restaurants, boutiques, and farmers market at your doorstep
- ✔ **BRAND NEW & WORRY-FREE**
Modern finishes, builder warranty, HOA handles exterior maintenance
- ✔ **OWN FOR LESS THAN YOU'RE PAYING IN RENT**
See our payment calculator inside



Perfectly Positioned For Your Life

-  **Downtown Chestertown**
2-minute walk to shops, dining & entertainment
-  **Chester River Waterfront**
5-minute drive to marinas, parks & kayaking
-  **Top-Rated Schools**
Kent County schools + Washington College nearby

-  **Easy Commuting**
35 min to Annapolis
60 min to Baltimore
90 min to DC

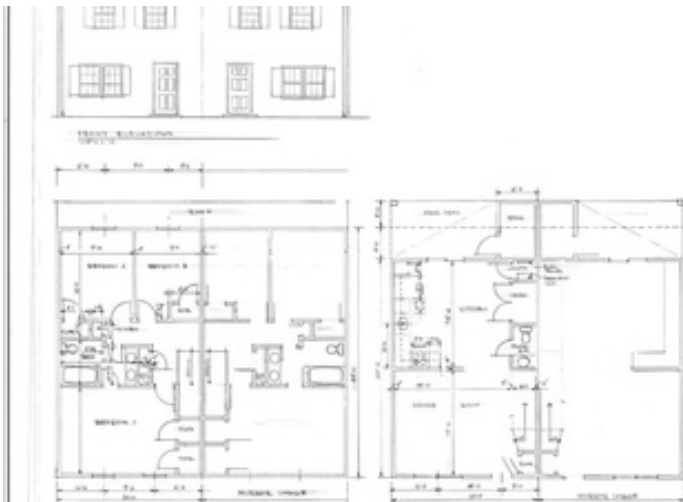
-  **Work-From-Home Ready**
High-speed internet, dedicated office spaces available

FINANCING MADE EASY
OWN FOR JUST \$1,347/MONTH*

- ✔ As little as Zero down (\$0.00)
- ✔ Builder incentives available on select homes

CHOOSE YOUR PERFECT FLOOR PLAN

3 Bedrooms  2 Bathrooms  1,400+ Square Feet 



INTERIOR UNIT **\$259,900**

- ✔ Best value - save \$5,000
- ✔ Lower utility costs (shared walls)
- ✔ Quieter location (away from street)
- ✔ Perfect for first-time buyers

Monthly Payment: **\$1,347***

END UNIT **\$264,900**

- ✔ Extra windows = more natural light
- ✔ Private side yard access
- ✔ Additional parking space
- ✔ Preferred for families & remote workers

Monthly Payment: **\$1,389***

Premium Finishes Included In Every Home



CHEF'S KITCHEN

- ✔ Granite countertops
- ✔ Stainless steel appliances
- ✔ Island with seating
- ✔ Shaker cabinetry
- ✔ Pantry storage



MODERN LIVING

- ✔ Open floor plan
- ✔ Light Filled Living Spaces
- ✔ Luxury vinyl plank flooring
- ✔ Ceiling Fans
- ✔ Modern Kitchen
- ✔ Private rear patio



COMFORT & STYLE

- ✔ Primary suite w/ double closet
- ✔ 2 modern bathrooms
- ✔ Granite vanities
- ✔ Laundry room on main level
- ✔ Ample storage throughout



SMART & EFFICIENT

- ✔ Energy-efficient HVAC
- ✔ Programmable thermostat
- ✔ Low utility costs
- ✔ 1 year warranty included
- ✔ HOA maintains exterior
- ✔ Snow removal & lawn care

- ✔ First-time buyer programs accepted
- ✔ Get pre-approved in 24 hours

*Based on \$259,900 purchase price, 20% down, current interest rates at time of production, subject to change. Payment includes principal, interest, taxes, insurance, and HOA fees.

Phase 1 Availability - Only 5 Units Remaining



■	SOLD	(5 units)
■	PENDING	(1 unit)
■	AVAILABLE	(5 units)

- Detail 1
- Detail 1
- Detail 2
- Detail 2
- Detail 3
- Detail 3

Schedule Your Private Tour Today

See why families are choosing Metcalf Townhomes for their new home. Tour the model and discover downtown Chestertown living.

Model Home Open Hours

Call or Text 443-733-6477 for Current Times & Current Model Home Address



SCAN TO SCHEDULE YOUR TOUR

David J. Moore & Associates

Your Trusted Real Estate Advisor
 20+ Years Experience | \$500M+ in Career Sales
 Maryland's First Real Estate Solutions Company



"My mission is to guide you into the RIGHT home with confidence and clarity—not just sell you a house."

CONTACT DAVID TODAY

☎ 443-733-6477
 ✉ connect@davidjmoore.net
 🌐 ChesapeakeShoresRealtor.com



"We were paying \$1,850 in rent and built zero equity. Now we own our home for \$1,347/month and we're building wealth. David made it so easy!"

- Sarah & Mike T., First-Time Homebuyers

Phase 1 Availability - Only 9 Units Remaining



SOLD (6 units)

PENDING (1 unit)

AVAILABLE (4 units)

- A few coming in July 2026
- Phase 3 starts Winter 2026

Schedule Your Private Tour Today

See why families are choosing Metcalf Townhomes for their new home. Tour the model and discover downtown Chestertown living.

Model Home Open Hours

Call or Text 443-733-6477 for Current Times & Current Model Home Address



SCAN TO SCHEDULE YOUR TOUR

DAVID J. MOORE & ASSOCIATES

Your Trusted Real Estate Advisor

- ✔ 20+ Years Experience
- ✔ \$500M+ in Career Sales
- ✔ Maryland's First Real Estate Solutions Company

"My mission is to guide you into the RIGHT home with confidence and clarity—not just sell you a house."



CONTACT DAVID TODAY

☎ 443-733-6477

✉ connect@davidjmoore.net

🌐 ChesapeakeShoresRealtor.com



"We were paying \$1,850 in rent and built zero equity. Now we own our home for \$1,347/month and we're building wealth. David made it so easy!"

- Sarah & Mike T., First-Time Homebuyers