



Welcome

YOUR NASHVILLE
RELOCATION
GUIDE

WELCOME TO NASHVILLE

COMPLIMENTS OF LESLIE PANFILI
WITH REAL BROKER



YOUR MUSIC CITY EXPERT

HI! MY NAME IS LESLIE PANFILI.

I'm your dedicated REALTOR ready to help you navigate the exciting world of real estate. With my passion for helping people relocate to the greater Nashville area and strong drive to provide top-notch service, I'm here to be your trusted guide through every step of your real estate journey. Having moved myself in 2017, I understand how overwhelming it can be to take on an entirely new culture, but in today's society, I also understand the importance of making sure you are confident in the state you're living in and raising your family. Whether you're leaving your current state for a job opportunity or a less governed life, I am excited to be on this journey with you.

I understand that buying or selling a property is not just a financial transaction—it's a life-changing decision. That's why I take the time to truly listen to your unique needs and preferences. I look forward to working with you and welcoming you as the newest resident in Middle Tennessee!



ABOUT NASHVILLE

Welcome to Nashville! The capital of Tennessee has grown exponentially in the past ten years and is the home of The County Music Hall of Fame, Grand Ole Opry, and the iconic Ryman Auditorium.

Nashville is nicknamed Music City, and for good reason. Broadway is never quiet, with live music blaring from the windows at all times. But if music isn't your thing, the restaurants and rich history the city provides is sure to keep your attention.

The growth the city has seen is in large part thanks to many diverse companies bringing an office or headquarters to the metro Nashville area!

We hope that you find what you love about this city, just as so many others have!



WHERE DO YOU WANT TO LIVE?

Are you wondering what factors are most important to you in finding your future home? Are you dreaming of living near the city, or perhaps you prefer the quiet of the suburbs? Maybe you're looking for top-rated schools in the area.

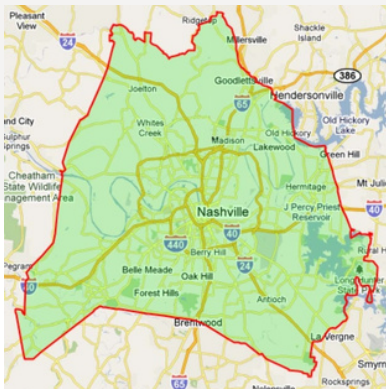
Explore the different counties around Nashville within this guide discover which one aligns perfectly with your lifestyle and preferences. I'm here to help you talk through these options and will help you decompress after your own exploring of the areas you'd like to see!

Once you've narrowed down the areas you'd like to house hunt in, but be sure to grab the guides for the specific counties you're interested in to do a deep dive and find out more about what they offer!

WWW.RELOCATEWITHLESLIE.COM

COUNTIES AROUND NASHVILLE

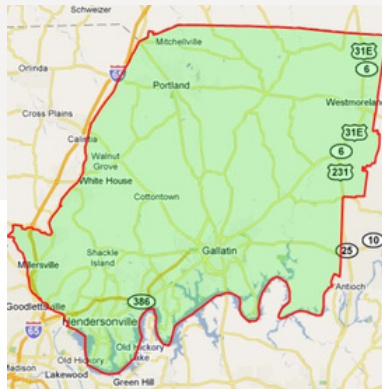
Uncover the ideal county to suit your needs



DAVIDSON

Davidson County is the capital county. It allows for a quick commute (If any) to any job downtown and includes many municipalities and towns.

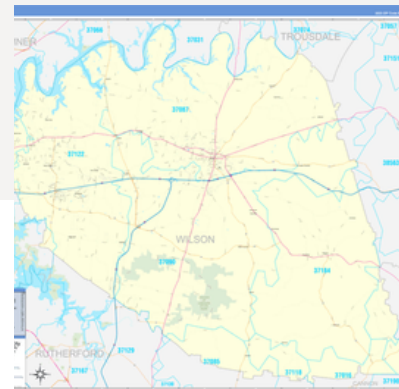
Davidson also shares a rich history with all it's citizens. From Andrew Jackson's Hermitage to the Country Music Hall of Fame, there is always something to do!



SUMNER

Sumner County is located twenty five miles northeast of Nashville and borders Kentucky.

It's a short commute from downtown Nashville, making it an ideal community for those who want more of a suburban feel but have access to the city. There's no shortage of things to do in Sumner County as well.



WILSON

Wilson County is just east of Davidson County.

It's home to a large concentration of cedar glades, a unique ecosystem that makes it hard for trees to grow because the soil is too rocky and/or shallow. Most of these glades are found in one of the State Parks - Cedars of Lebanon.

COUNTIES AROUND NASHVILLE

Uncover the ideal county to suit your needs



RUTHERFORD

Rutherford County is southeast of Davidson County and is ranked as the fifth most populous county in the state.

From here, you can commute to Nashville or Murfreesboro pretty easily.

WILLIAMSON

Williamson County is south of Davidson County and is known for its educational system and towns.

It includes towns that are still very rural and have a country life feel as well as towns that have malls, shopping, and easy access to Interstate 65 for a simple commute.

CHEATHAM

Cheatham County is almost directly east of Davidson County.

The Harpeth River and Cumberland River both run through the county, giving it plenty of areas to enjoy the outdoors. The southern part of the county is a more hilly terrain. This county speaks to the nature lovers and adventure seekers.



DAVIDSON COUNTY

Davidson County is made up of many neighborhood and municipalities. Depending on their location, some are more preferred by young professionals while others cater more towards families. The following are the areas that make up those municipalities/neighborhoods:

Belle Meade, Berry Hill, Forest Hills, Goodlettsville, Oak Hill, Ridgetop, Antioch, Bellevue, Donelson, Green Hills, Hermitage, Inglewood, Joelton, Lakewood, Madison, Old Hickory, Pasquo, West Meade, Whites Creek, 12South, East Nashville, Germantown, Bordeaux, North Nashville, Sylvan Park, and more!

The county is home to many diverse employers and professional opportunities. Take your pick from healthcare to a government job, but rest assured, you'll likely be able to find what you're looking for in Davidson County!

TOP 5 EMPLOYERS IN YOUR CITY

- 1 Vanderbilt University
- 2 Nissan North America
- 3 United Healthcare
- 4 Williamson Medical Center
- 5 Optum, Inc.

PROVIDED BY NICHE.COM



SUMNER COUNTY

Sumner County is known for its good schools, good roads, low tax rates, and an abundance of water contributing to its quality of life. It has eight different towns that make up its county. Goodlettsville, also partly in Davidson County, is the closest town in the county to the metro area, while Hendersonville holds the highest population numbers. Gallatin holds the county seat for, while Millersville, Portland, and White House all straddle Robertson County.

The town of Gallatin tends to be the employment hub for Sumner County and has been designated as a Foreign Trade Zone to encourage more international commerce.

TOP 5 EMPLOYERS IN YOUR CITY

- 1 Sumner County Government & Schools
- 2 Sumner Regional Medical Center
- 3 Gap Inc.
- 4 Volunteer State Community College
- 5 Servpro Industries

PROVIDED BY LIVABILITY.COM



WILSON COUNTY

Wilson County includes Mount Juliet and Lebanon, as well as the town of Watertown and a good amount of census designated places and unincorporated communities. Mount Juliet is the largest area within the county, while Lebanon holds the county seat.

Wilson County has two school districts: Lebanon Special School District and Wilson County School District - the first of which includes K-8 and special education services. The Wilson County School District includes all high school zoning for the entire county.

TOP 5 EMPLOYERS IN YOUR CITY

- 1 Under Armour
- 2 Amazon - Mt Juliet
- 3 Cracker Barrel
- 4 Performance Food Group
- 5 CEVA Logistics

PROVIDED BY MTJULIET-TN.GOV



WILSON COUNTY

Wilson County includes Mount Juliet and Lebanon, as well as the town of Watertown and a good amount of census designated places and unincorporated communities. Mount Juliet is the largest area within the county, while Lebanon holds the county seat.

Wilson County has two school districts: Lebanon Special School District and Wilson County School District - the first of which includes K-8 and special education services. The Wilson County School District includes all high school zoning for the entire county.

TOP 5 EMPLOYERS IN YOUR CITY

- 1 Under Armour
- 2 Amazon - Mt Juliet
- 3 Cracker Barrel
- 4 Performance Food Group
- 5 CEVA Logistics

PROVIDED BY MTJULIET-TN.GOV



READY TO LEARN MORE?

Let us help you find your next home -
virtually or in person!

CONTACT ME TODAY!

WWW.RELOCATEWITHLESLIE.COM



Leslie went above and beyond helping my husband & I find our new home. We moved 6 hours and sold our house to be in Middle Tennessee. Throughout the obstacles, Leslie's communication and hard work never failed. I am so thankful that I was referred to her and I could not imagine anyone else in this journey of ours!



Leslie was a dream to work with. We were moving across the country, and required a lot of handholding via zoom walk-throughs and out-of-state closings. Leslie handled it wonderfully. She was always receptive and responsive. I would strongly recommend doing business with her. The next time we are in the market for a house she will be my first call!



MOVING TO NASHVILLE MADE SIMPLE.

CONTACT ME
TODAY FOR ANY
REAL ESTATE
INQUIRIES.

PHONE NUMBER
609-975-2093

EMAIL ADDRESS
leslie@lesliepanfili.com

WEBSITE
www.relocatewithleslie.com



THANK YOU AND
WELCOME TO
NASHVILLE...

We can't wait to meet you!