

# The Insider's Guide

TO KAKA'AKO CONDOS

PREPARED BY  
JACK O'CONNOR

REAL BROKER  
RS-82955  
1050 QUEEN STREET  
HOMOLULU

realHNL

# Kaka'ako Condos

## WAIEA: ULTRA-LUXURY

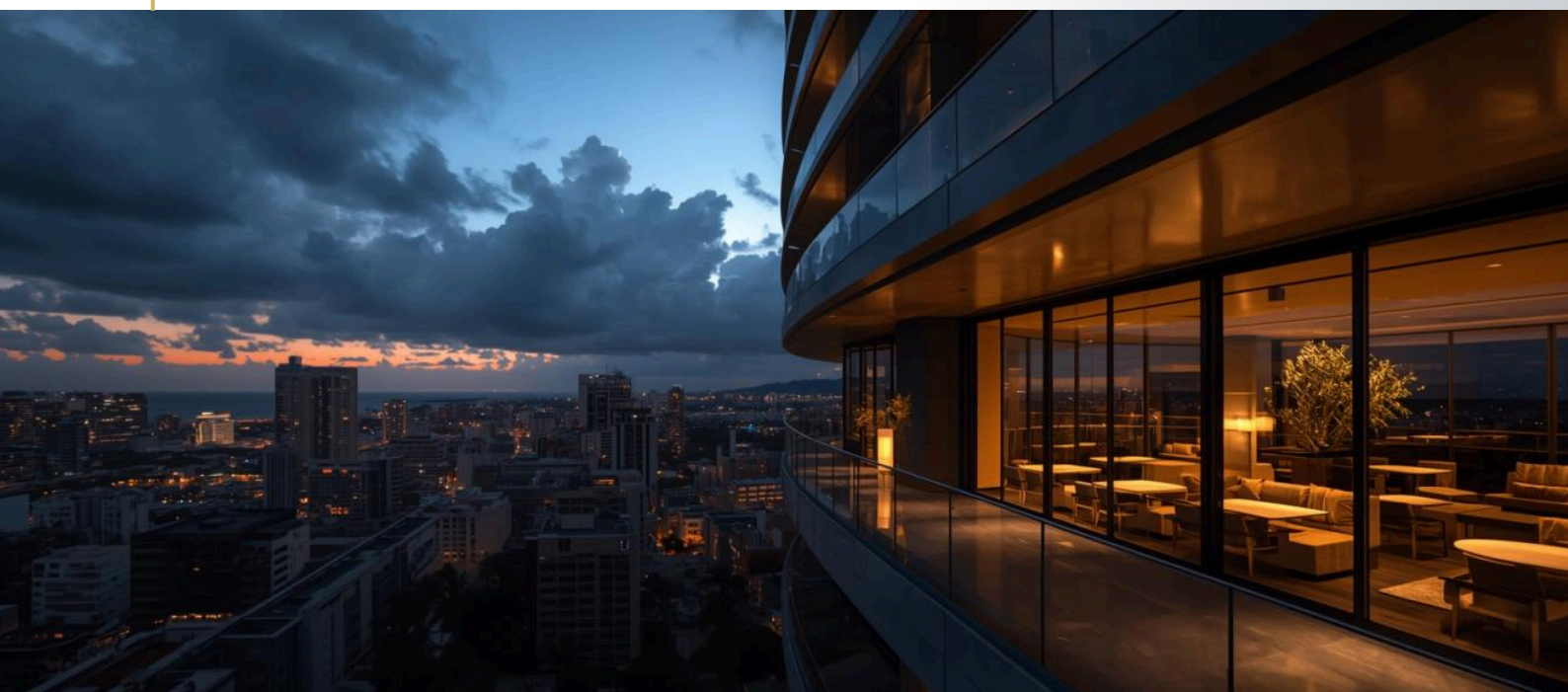
Waiea offers **the pinnacle of luxury living** with iconic architecture and resort-style amenities in Kakaako. Best for Views and a desire for privacy.

## AE'O: BEST AMENITIES

Ae'o boasts **top-tier amenities**, including a Whole Foods Market, fitness center, movie theaters and social lounges for residents.

## ANAHA: ARCHITECTURAL ICON

Best opportunity for pricing given the changing site lines. Boasts the famous glass cantilevered pool, spa + sauna, world class architecture and one of a kind art works only found in the Anaha,



# Kaka'ako Condos

## **'A'ALI'I: BEST FOR URBAN PROFESSIONALS**

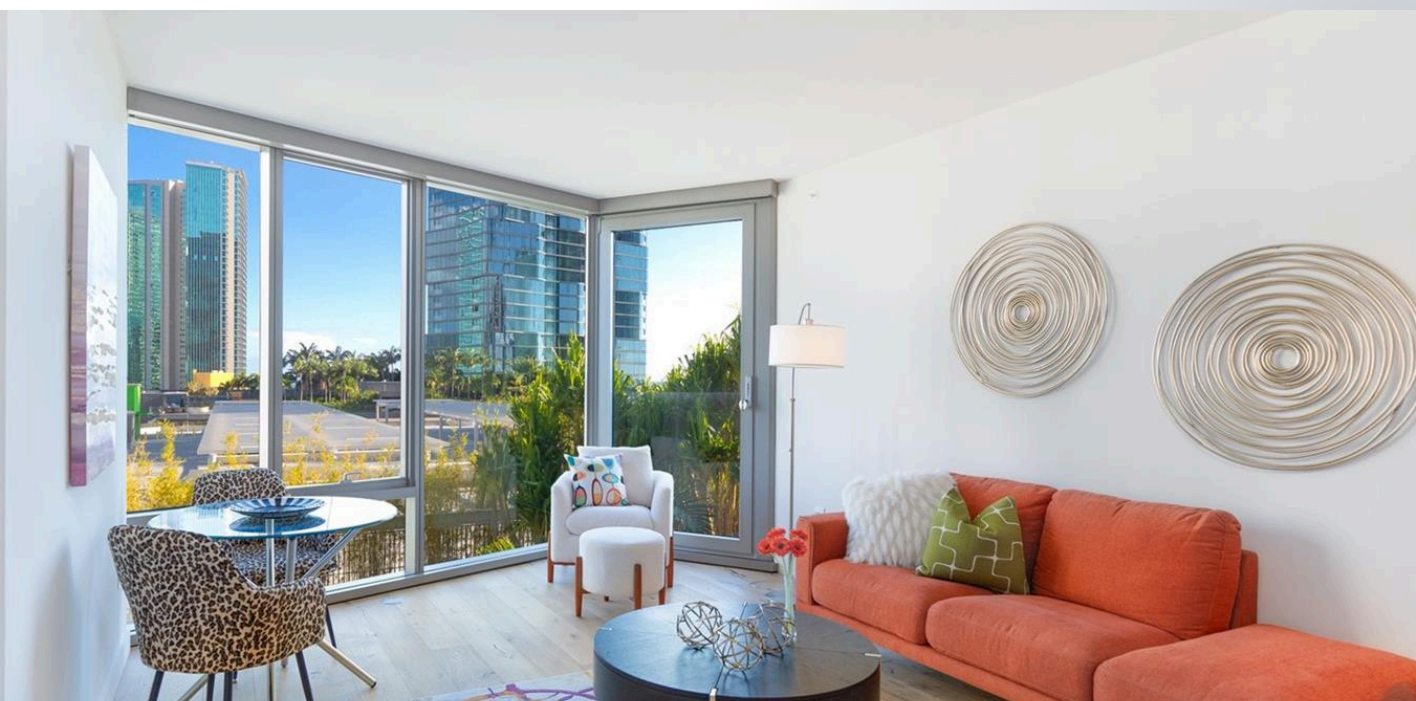
'A'ali'i is designed for the modern urban professional — efficiently designed studios and one-bedrooms with full access to Ward Village's lifestyle at a lower price point than its neighbors

## **KO'ULA: BEST ARCHITECTURE + OUTDOOR LIVING**

Ko'ula's iconic sculpted design by world-renowned architect Jeanne Gang bends toward the ocean to maximize views. Situated next to Victoria Ward Park, it offers a resort-style pool, vibrant ground-floor retail, and one of the best parks for kids on the island.

## **VICTORIA PLACE: FIRST-ROW ULTRA-LUXURY**

Victoria Place is one of Kakaako's most coveted addresses — a sold-out ultra-luxury tower with front-row Ala Moana and ocean views, refined interiors, and resort-level amenities. Resale only



# Kaka'ako Condos

## **LAUNI: NEW CONSTRUCTION, FRONT-ROW WARD VILLAGE**

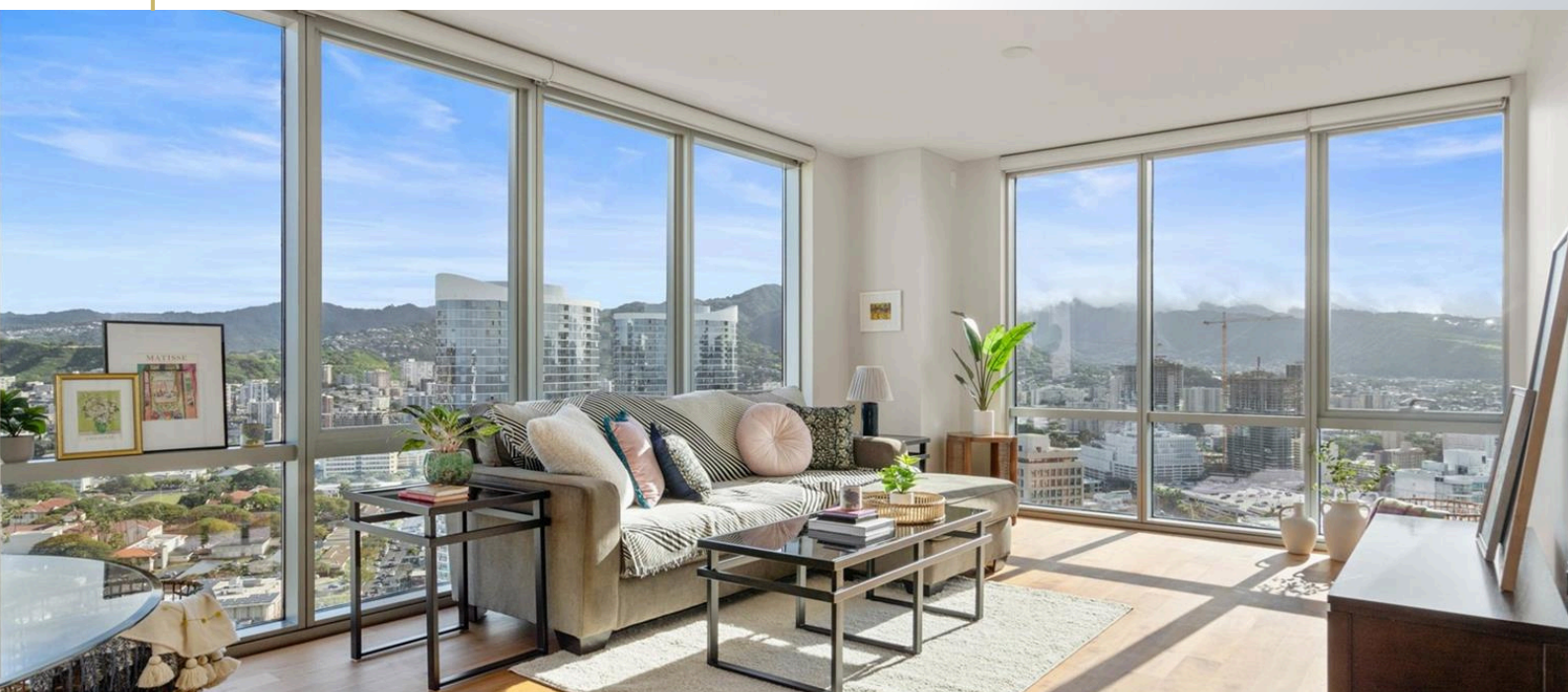
Launi is Ward Village's newest front-row tower, offering studios through three-bedrooms, 78,000+ sq ft of indoor and outdoor recreation space, and mountain-to-ocean view corridors. A rare chance to buy new in Ward Village

## **KALAE: THE BEST FRONT-ROW VIEWS IN WARD VILLAGE**

Kalae is Ward Village's front-row luxury tower — a nearly sold-out high-rise drawing design inspiration from early 20th-century Oahu landmarks, with unobstructed ocean views and a distinctive suite of courtyard amenities

## **ILIMA: THE FUTURE PINNACLE OF WARD VILLAGE LUXURY**

Ilima is poised to be the most luxurious building ever built in Ward Village — a joint venture between Howard Hughes and Discovery Land Company with classical limestone architecture inspired by early Manhattan, and spacious 2- to 5-bedroom residences.



# Kaka'ako Condos

## BEST VALUE & SPACE

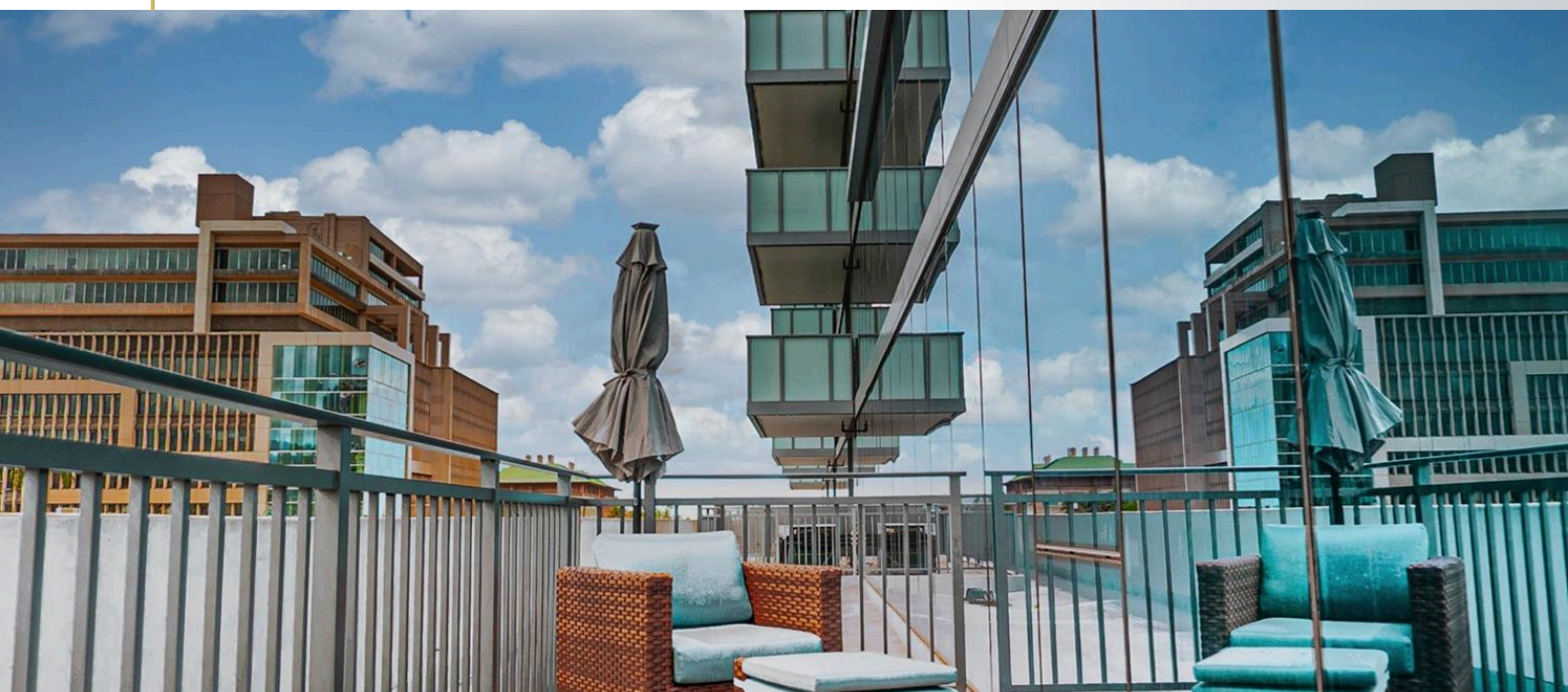
The Collection offers spacious floor plans at **affordable prices**, ideal for buyers seeking more room.

## MID-RANGE SWEET SPOT

Keauhou Place serves as a **great entry point** into Kaka'ako, balancing amenities with accessible pricing.

## NOTABLE MENTIONS

- **400 KEAWE: BEST LOW-RISE + LOW MAINTENANCE FEES**
- **KALI'U: LAST CHANCE FOR LUXURY IN OUR KAKAAKO**
- **HOKUA: HONOLULU'S ORIGINAL LUXURY HIGH-RISE**



# Family & Professionals

## AVERAGE CONDO SIZE

721 ft<sup>2</sup>

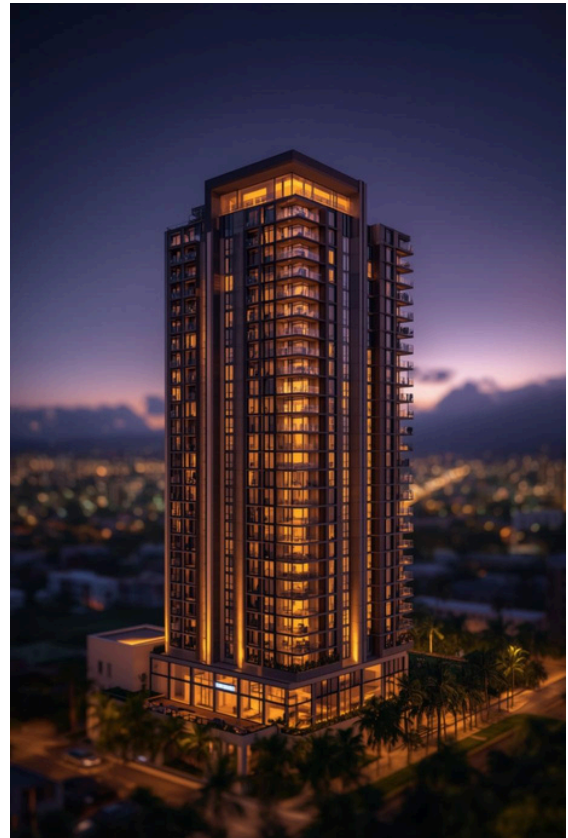
ONE BEDROOM

1,211 Ft<sup>2</sup>

TWO BEDROOMS

1,830 ft<sup>2</sup>

THREE BEDROOMS



## AVERAGE PRICE

1,489,000

ANAHA

751,960

'A'ALI'

944,300

THE COLLECTION

# Kaka'ako Market Insights

## CURRENT TRENDS

-4.86%

PRICE DECREASE YO/Y

271

ACTIVE LISTINGS

\$1.3M

MEDIAN PRICE

## TWO MASTER COMMUNITIES

OUR KAKA'AKO

WARD VILLAGE

## FUTURE DEVELOPMENTS

- HONOLULU RAIL
- NEW RETAIL SPACES
- COMMUNITY INITIATIVES

# Kaka'ako Expertise

[www.realhnl.com](http://www.realhnl.com)

[jack.oconnor@realHNL.com](mailto:jack.oconnor@realHNL.com)

808.388.8167



Reach out for Exclusive Access. New Developments +  
The Inside Track on Where Honolulu Is Headed

[realHNL](http://realHNL.com)