



Strong Scott

451 Taft Street NE Minneapolis, MN



REVOLUTION
-REALTY GROUP-



REALTOR®



KELLERWILLIAMS
PREMIER REALTY

Historic Office & Industrial Space for Lease in Minneapolis

INTRODUCTION

451 Taft Street NE, also known as the Strong Scott Building, is a prominent historic industrial property located in the heart of Minneapolis's vibrant Northeast Arts District. The site spans approximately 90,210 square feet and has become a hub for creative, cultural, and entrepreneurial activity. Owned and managed by First & First LLC, a developer known for its expertise in adaptive reuse, the property blends historic preservation with modern functionality, attracting a diverse mix of tenants and visitors alike.



James Faillettaz
Team Lead

REALTOR

(612) 217-2032

Jamesfaillettaz@kw.com

Spencer Baker

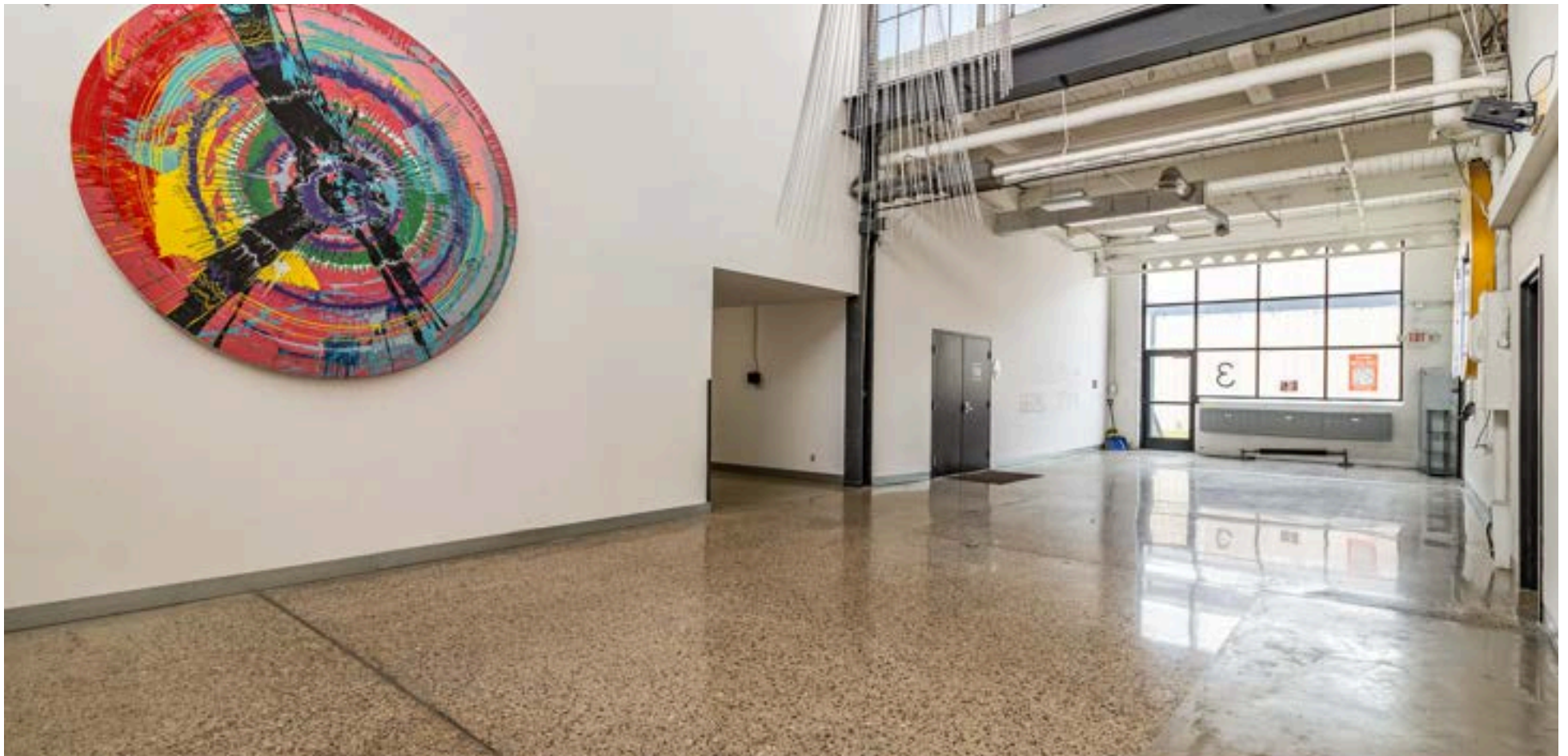
REALTOR

651-280-7751

spencerbaker@kw.com



REVOLUTION
-REALTY GROUP-



OVERVIEW

Constructed in 1931, the Strong Scott Building originally served as the headquarters and manufacturing facility for the Strong Scott Manufacturing Company, a key player in Minneapolis's industrial development. The company specialized in the production of heavy machinery critical to the energy and manufacturing sectors of the early 20th century. The building's distinctive industrial architecture and robust construction reflect the era's emphasis on durability and functionality.

Over time, as industry in the region evolved, the building transitioned from manufacturing to a variety of other uses. Its enduring presence stands as a testament to the city's industrial heritage and its ability to adapt to changing economic landscapes. The structure is considered a contributing element to the historic fabric of Northeast Minneapolis, retaining its original character while serving contemporary purposes.



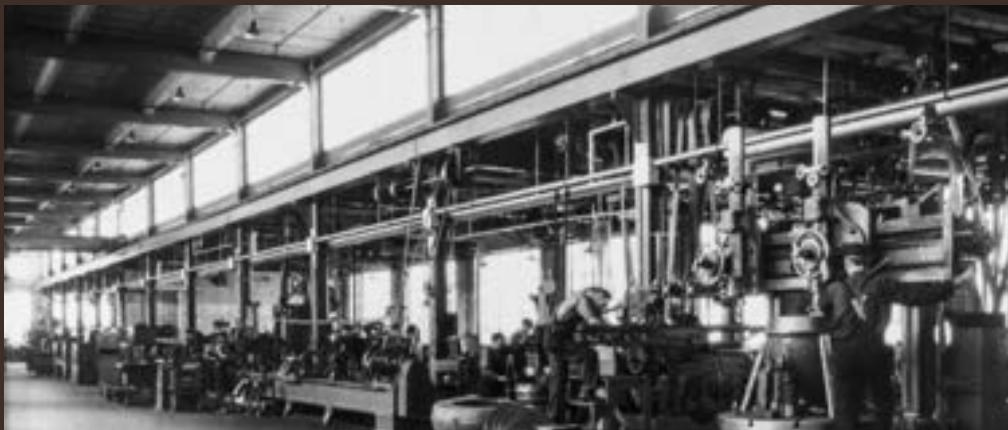
History Of The Building

The building located at 451 Taft Street NE in Minneapolis, Minnesota, is known as the Strong Scott Building. Constructed in 1931, it originally served as an industrial facility for Strong Scott Manufacturing, a company specializing in the production of coal pulverizers and other heavy machinery. The company ceased operations in 1967, leaving the building available for repurposing.

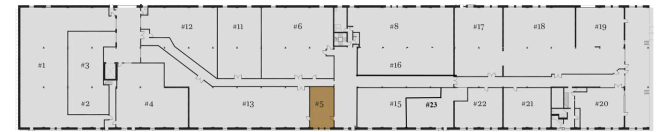
In recent years, the Strong Scott Building has been revitalized as a hub for creative and artisanal enterprises. Notably, it houses Norseman Distillery, Minneapolis's first micro-distillery, which occupies a portion of the building and offers a cocktail room and event space . Additionally, the building is home to various other businesses, including Sisyphus Industries, an artisan furniture store that creates tables with ever-changing designs.

The property's redevelopment and management are overseen by First & First LLC, a Minneapolis-based company dedicated to preserving cultural heritage through the adaptive reuse of historic buildings. Some of their notable past projects include Vandalia Tower, The Broadway and Icehouse Plaza.

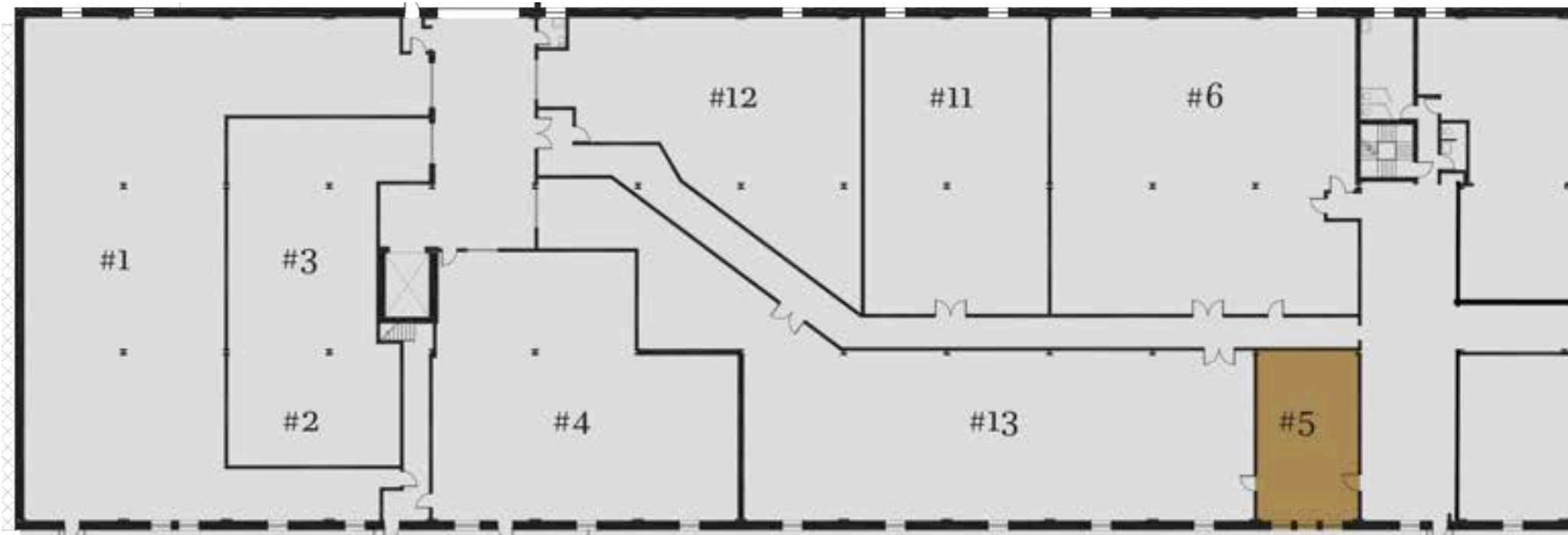
Today, the Strong Scott Building stands as a testament to Minneapolis's industrial past and its ongoing commitment to cultural preservation and innovation.



AVAILABLE SPACES



KEY PLAN



Unit 5

Main Level - 815 SF

Total Monthly Rent - \$1,460.21

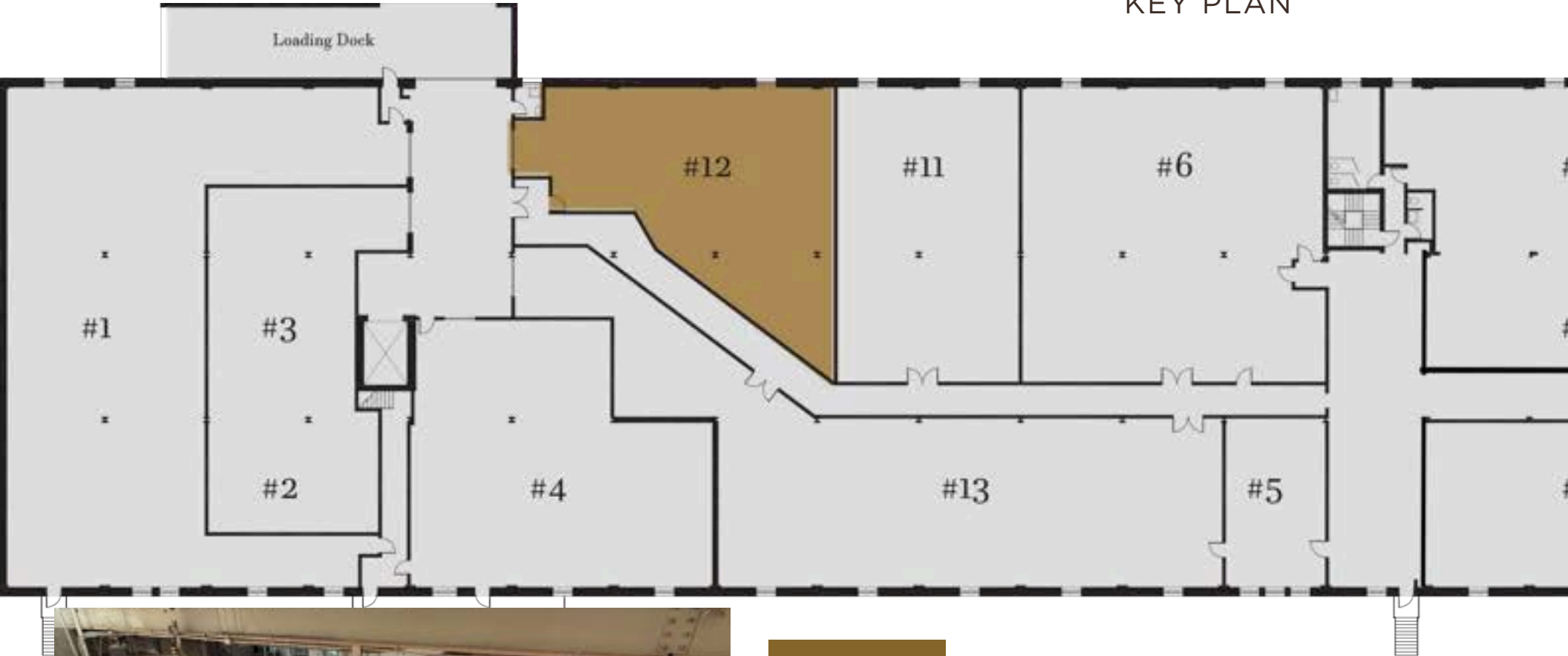
Base Rent - \$15.00/Sqft

CAM - \$6.50/Sqft

AVAILABLE SPACES



KEY PLAN



Unit 12

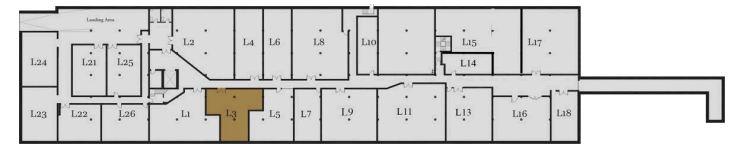
Main Level - 2530 SF

Total Monthly Rent - \$3162.50

Base Rent - \$10/Sqft

CAM - \$6.50/Sqft

AVAILABLE SPACES



KEY PLAN



Unit L3

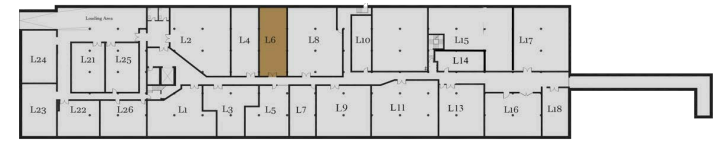
Lower Level - 1339 SF

Total Monthly Rent - \$1394.79

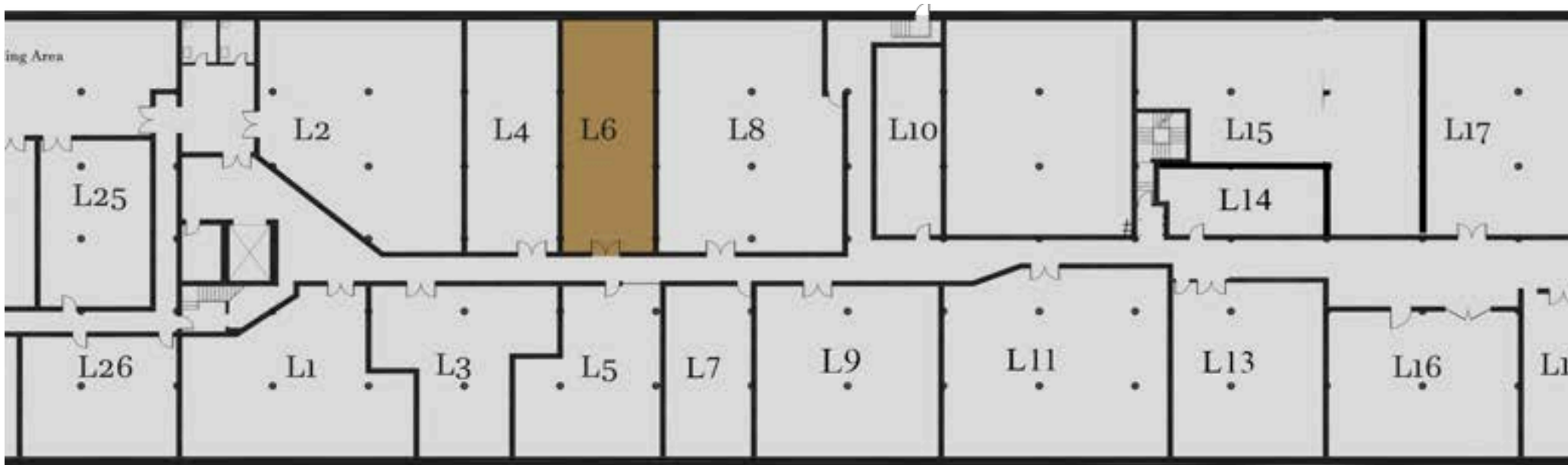
Base Rent - \$6.00/Sqft

CAM - \$6.50/Sqft

AVAILABLE SPACES



KEY PLAN



Unit L6

Lower Level - 1242 SF

Total Monthly Rent - \$1293.75

Base Rent - \$6.00/Sqft

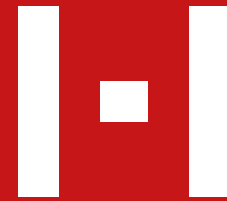
CAM - \$6.50/Sqft



ABOUT FIRST & FIRST



First & First is committed to reimagining historically significant sites within the Minneapolis and St. Paul urban landscape. We transform these neglected spaces into inspired places that facilitate creative and cultural experiences. Each First & First site ultimately becomes a place where creativity and productivity embrace each other whilst enabling dreams to become reality.



These revitalized places build bridges to the future that allow us to see both where we are going and where we have been. Please join us as we endeavor to build inspired environments which remind all of us that our time on this planet is brief—and that it is our human imperative to create.

ART CULTURE

The Northeast Minneapolis Arts District has earned repeated national praise, being named the #1 Arts District in the USA Today 10 Best Reader's Choice Travel Awards in 2015, 2022, and 2023. Covering about one square mile, it's a lively destination filled with open studios, galleries, monthly events, and arts organizations that together create a unique creative hub. Many studios welcome visitors daily, and with the Arts District Map in hand, you can easily explore its walkable, bike-friendly neighborhoods decorated with murals, sculptures, and functional art. This district invites as much exploration as it does appreciation. Visitors can wander through historic warehouses transformed into working artist spaces or join celebrated community events such as Art-A-Whirl—the largest open studio tour in the country—held every year on the third weekend of May. Inside these buildings, artists' works and personal touches fill the halls, encouraging you to browse at your own pace. Guided by its motto, "The Arts at Work (SM)," the Northeast Minneapolis Arts District seamlessly weaves creativity into everyday life, making each street, studio, and public space a place where art thrives in unexpected ways.

